

PrepAwayPDF



ONLINE TEST ENGINE

- ✓ Online Tool, Convenient, easy to study.
- ✓ Instant Online Access
- ✓ Supports All Web Browsers
- ✓ Practice Online Anytime
- ✓ Test History and Performance Review
- ✓ Supports Windows / Mac / Android / iOS, etc.

[Online Test Engine](#)



DESKTOP TEST ENGINE

- ✓ Installable Software Application
- ✓ Simulates Real Exam Environment
- ✓ Builds Exam Confidence
- ✓ Supports MS Operating System
- ✓ Two Modes For Practice
- ✓ Practice Offline Anytime

[Desktop Test Engine](#)



PDF PRACTICE Q&A'S

- ✓ Printable PDF Format
- ✓ Prepared by IT Experts
- ✓ Instant Access to Download
- ✓ Study Anywhere, Anytime
- ✓ 365 Days Free Updates
- ✓ Free PDF Demo Available

[PDF Practice Q&A's](#)



60920

Demo Downloads



59520

Successfull Cases



59062

Satisfied Clients



59146

The number of consulting

<http://www.prepawaypdf.com/>

Best Professional Test Guide Help You Pass and Provide Safe Shopping

Exam : **NS0-519**

Title : NetApp Certified
Implementation Engineer -
SAN, ONTAP

Vendor : Network Appliance

Version : DEMO

NO.1 Which protocol provides multipathing and path management for both path and target failover for NVMe over Fibre Channel (NVMe/FC)?

- A. Asymmetric Logical Unit Access (ALUA)
- B. Asynchronous Namespace Access (ANA)
- C. NVMe namespaces
- D. N_Port ID virtualization (NPIV)

Answer: B

NO.2 A customer has decided to repurpose a NetApp FC target card from an older system. After installing the card into the newer NetApp AFF, the system kernel panics on boot. Which tool would you use determine the problem?

- A. Active IQ OneCollect
- B. OnCommand Insight (OCI)
- C. Interoperability Matrix Tool (IMT)
- D. Hardware Universe (HWU)

Answer: D

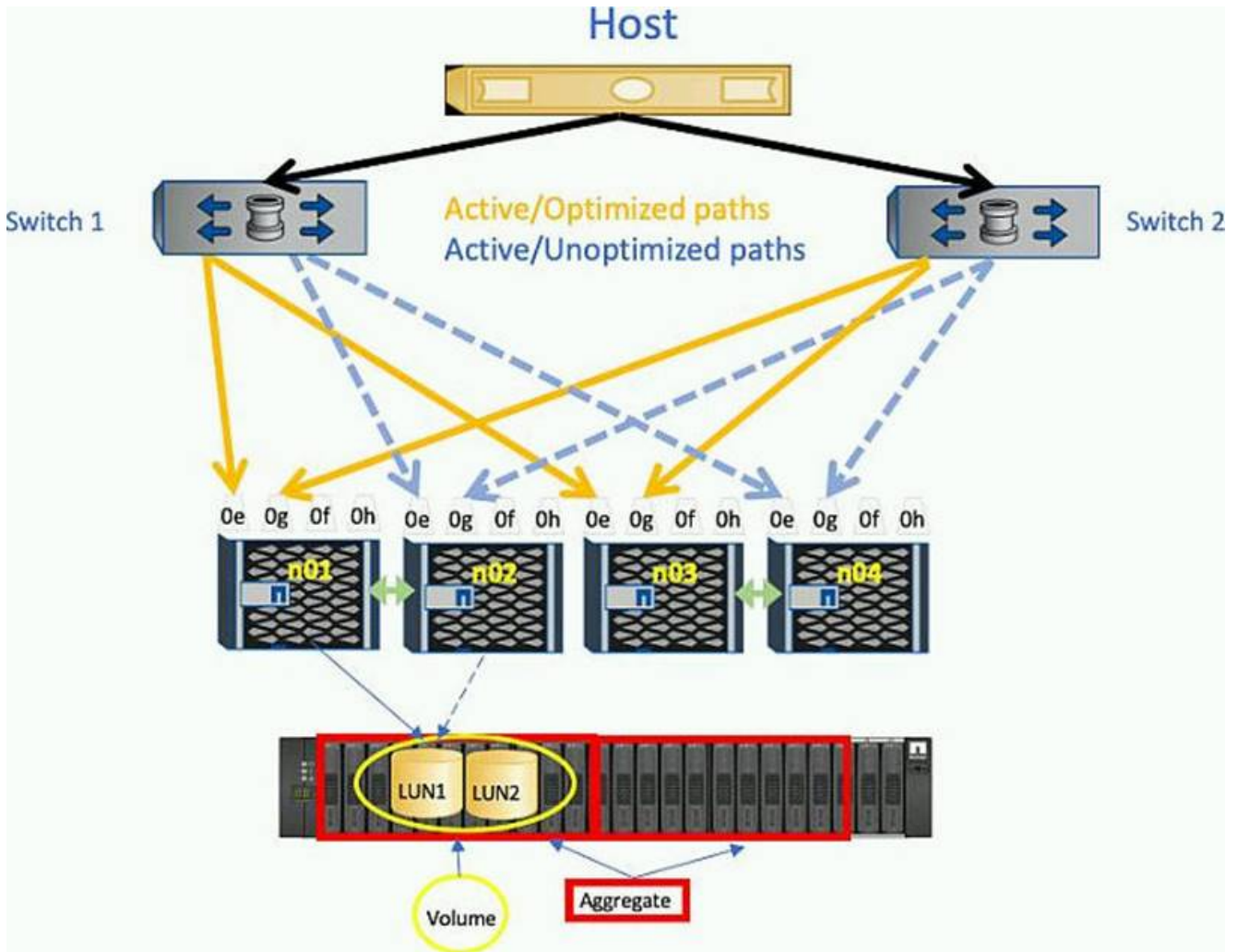
NO.3 An ONTAP administrator is troubleshooting a fabric login issue with a client. The SVM in question uses both FC and NFS protocols.

In this scenario, what would be the least disruptive operation?

- A. Use ONTAP System Manager to stop and then restart the SVM.
- B. Use ONTAP System Manager to disable and then re-enable the LIF port in the SVM.
- C. Reboot the Brocade switch.
- D. Use the command line to stop and start the FCP service on the cluster.

Answer: C

NO.4 Click the Exhibit button.



Referring to the exhibit, you need to reduce the number of paths from the host to the LUNs. Which three would reduce the number of paths? (Choose three.)

- A. port sets
- B. switch zoning
- C. Selective LUN Map (SLM)
- D. ALUA
- E. Asymmetric Namespace Access (ANA)

Answer: A,B,C

NO.5 Click the Exhibit button.

```
cl1::> uadmin show
```

Node	Adapter	Current Mode	Current Type	Pending Mode	Pending Type	Admin Status
01a	0e	cna	target	-	-	online
01a	0f	cna	target	-	-	online
01a	0g	cna	target	-	fc	online
01a	0h	cna	target	-	fc	online
01b	0e	cna	target	-	-	online
01b	0f	cna	target	-	-	online
01b	0g	cna	target	-	fc	online
01b	0h	cna	target	-	fc	online
02a	0c	cna	target	-	-	online
02a	0d	cna	target	-	-	online
02a	0e	cna	target	-	-	online
02a	0f	cna	target	-	-	online
02b	0c	cna	target	-	-	online
02b	0d	cna	target	-	-	online
02b	0e	cna	target	-	-	online
02b	0f	cna	target	-	-	online

16 entries were displayed.

```
cl1::> vserver show -fields allowed-protocols
```

vserver	allowed-protocols
01a	-
01b	-
02a	-
02b	-
cl1	-
svfc2	fc
svfile1	cifs,nfs
svfile3	cifs,nfs
svfile4	cifs

9 entries were displayed.

```
cl1::> vserver fc show
```

Vserver	Target Name	Status	Admin
svfc2	20:04:00:a0:98:94:1b:df	up	

An administrator has added two nodes to an existing cluster. The administrator created the svfc2 SVM to use FC to present LUNs to hosts. The hosts are unable to see the LUNs that have been presented to them.

Referring to the exhibit, what is the problem?

- A. The FC service on the SVM has been stopped.
- B. The FC ports show the status of admin down.
- C. The FC protocol needs to be added to the allowed protocols list.
- D. The UTA mode change is pending a reboot.

Answer: D

NO.6 You have a 4-node cluster with an AFF A400 FIA pair and a FAS8700 FIA pair. You need to configure all aggregates so that they have an SSD performance tier and slower capacity tier. The cluster serves only FC LUNs to hosts.

Which two ONTAP features satisfy the requirement for this cluster? (Choose two.)

- A.** Flash Pool
- B.** FabricPool
- C.** FlexCache
- D.** SnapMirror

Answer: A,B