

PrepAwayPDF



ONLINE TEST ENGINE

- ✓ Online Tool, Convenient, easy to study.
- ✓ Instant Online Access
- ✓ Supports All Web Browsers
- ✓ Practice Online Anytime
- ✓ Test History and Performance Review
- ✓ Supports Windows / Mac / Android / iOS, etc.

[Online Test Engine](#)



DESKTOP TEST ENGINE

- ✓ Installable Software Application
- ✓ Simulates Real Exam Environment
- ✓ Builds Exam Confidence
- ✓ Supports MS Operating System
- ✓ Two Modes For Practice
- ✓ Practice Offline Anytime

[Desktop Test Engine](#)



PDF PRACTICE Q&A'S

- ✓ Printable PDF Format
- ✓ Prepared by IT Experts
- ✓ Instant Access to Download
- ✓ Study Anywhere, Anytime
- ✓ 365 Days Free Updates
- ✓ Free PDF Demo Available

[PDF Practice Q&A's](#)



60920

Demo Downloads



59520

Successfull Cases



59062

Satisfied Clients



59146

The number of consulting

<http://www.prepawaypdf.com/>

Best Professional Test Guide Help You Pass and Provide Safe Shopping

Exam : **MB-330-JPN**

Title : Microsoft Dynamics 365
Supply Chain Management
Functional Consultant (MB-
330日本語版)

Vendor : Microsoft

Version : DEMO

QUESTION NO: 1

在庫管理チームのコスト管理要件を満たすようにシステムを設定する必要があります。どのプロセスを実行すべきでしょうか？回答するには、適切なプロセスを正しい要件にドラッグしてください。各プロセスは、1回、複数回、またはまったく使用しない場合があります。コンテンツを表示するには、ペイン間の分割バーをドラッグするか、スクロールする必要があります。

注：正解ごとに1ポイントが加算されます。

Processes	Requirement	Process
Inventory Aging Report	Daily Process	Process
Inventory Close	Monthly	Process
Inventory Recalculation		
Reverse Close		

Answer:

Processes	Requirement	Process
Inventory Aging Report	Daily Process	Inventory Recalculation
Inventory Close	Monthly	Inventory Close
Inventory Recalculation		
Reverse Close		

Explanation:

Requirement	Process
Daily Process	Inventory Recalculation
Monthly	Inventory Close

Reference:

<https://docs.microsoft.com/en-us/dynamics365/supply-chain/cost-management/inventory->

close

Topic 1, Wide World Importers

This is a case study, Case studies are not timed separately. You can use as much exam time as you would like to complete each case. However, there may be additional case studies and sections on this exam. You must manage your time to ensure that you are able to complete all questions included on this exam in the time provided.

To answer the questions included in a case study, you will need to reference information that is provided in the case study. Case studies might contain exhibits and other resources that provide more information about the scenario that is described in the case study. Each question is independent of the other questions in this case study.

At the end of this case study, a review screen will appear. This screen allows you to review your answers and to make changes before you move to the next section of the exam. After you begin a new section, you cannot return to this section.

To start the case study

To display the first question in this case study, click the Next button. Use the buttons in the left pane to explore the content of the case study before you answer the questions. Clicking these buttons displays information such as business requirements, existing environment, and problem statements, if the case study has an All Information tab. Note that the information displayed is identical to the information displayed on the subsequent tabs. When you are ready to answer a question, click the Question button to return to the question.

Background

Wide World Importers is a distribution company whose primary customers are small boutique shops which sell globally-sourced products including unique or hand-crafted items such as perfumes and ceramicware.

Through the Wide World Importers sales cycles, the commissions-based sales team identifies opportunities and negotiates with shops by using a quoting process. The products may or may not already exist in the company's current product list.

The company has the following divisions and areas of responsibility:

Division	Responsibilities
Sales	Source customers, generate quotes
Inventory	Create products and associated setups, manage costing
Compliance	Define testing, set up regulatory requirements
Customer service	Create and manage orders

Current environment

Wide World Importers use Dynamics 365 Finance and Dynamics 365 Supply Chain Management. There is a single legal entity.

The primary distribution center for the company is located Las Vegas, Nevada, USA. There is an additional warehouse in California which receives imported goods from container ships. When goods are received in California, the goods are transferred to Nevada for distribution. No orders are shipped directly from California.

Sales

The company has two teams of sales representatives East and West. Each team has one representative for each of the following categories of goods; perfumes, ceramicware and all other goods. Sales representatives are paid commissions based on sales. Commissions must be paid based on the home office location for customers.

For example, commission for a customer that is headquartered in the Western United States is paid to the West group of sales representatives.

Sales representatives are responsible for driving new business. Company executives must be able to see metrics define the companies that the sales representatives are targeting, where there is potential to do business, and where quotes are being generated. Customer records must not be created until a sale is confirmed.

The sales team quoted a new perfume for a customer named Customer1. The customer has shipping locations in the following regions. United States, Austria. and Japan. Sales must only be made to the US and Japan due to product ingredients. Automated checks must be put into place so that users do not have to remember to select the correct item.

Testing

The company periodically performs testing on ceramicware as it is received to determine whether the products contain lead The company labels and markets ceramicware as Lead Free or Not for food use Perfumes may contain restricted ingredients that cannot be sold to customers in the European Union. The company performs testing on perfumes and has processes to ensure that perfumes containing restricted ingredients are not sold to customers in Europe.

Ten percent of all ceramiavare items received must be tested for lead. The process for managing testing must be automated. There must be tolerances setup that define the acceptable amount of lead levels in a product.

Inventory management

The inventory team must control costing of items by using FIFO principles. The finance team must be able to see updated FIFO adjustments throughout the month but win only settle FIFO for month-end reporting Inventory close must lie run at the end of each month. A report must be provided to the finance team that includes the physical quantities and inventory value for items, with totals at the bottom. The warehouse team needs a similar report but does not want the inventory value included. During inventory close, some items cannot be fully costed because the issue cannot be settled against the receipt. The finance team must know which items were excluded.

Other inventory requirements

- * Inventory must be reserved against physical inventory.

- * Items must be grouped so that the inventory costing can posted to the ledger by using the following groups:

perfumes, ceramicware. other goods. All goods are FIFO. Financial reports must be grouped by these three categories, even the transactions from all categories posts to the same ledger accounts.

- * Wide World Importers plans to import a specific type of pottery from a local company in Mexico that handmakes the goods. The pottery must be available in orange of red colors. The cost is the same regardless of the color selection.

- * A new line of perfumes is being introduced. The procurement team must be able to identify which perfumes are men s or women ' s fragrances, and must be able to further categorize perfumes as Perfume. Eau de Perfume, Eau de Toilette. Eau de Cologne, or Eau Fraiche.

- * You must set up a structure of products for classifying each item for purchase, sales and reporting analysis Issue Customer service representatives report that some inventory shows as ordered reserved when the ordered reserved parameter is turned off.

An item that is typically carried is out of stock. A stock. A customer named Customer2 wants to place a special rush order for the item. This will result in a significantly increased cost from the supplier. The finance team does not want to have this special order affected the FIFO tiers.

QUESTION NO: 2

在庫レポートを設定する必要があります。

どの設定を使用すべきでしょうか？回答するには、回答欄で適切なオプションを選択してください。

注：正解ごとに1ポイントが加算されます。

Requirement

Configure the system to support the reports for the inventory control and warehouse teams.

Report option

Report ID
Resource ID
Detail Level
Inventory

Enable totals for the inventory close report.

Disable Summarize, Print Totals
Enable Summarize and Print Totals
Inventory
Resource Group

Answer:

Requirement

Configure the system to support the reports for the inventory control and warehouse teams.

Report option

Report ID
Resource ID
Detail Level
Inventory

Enable totals for the inventory close report.

Disable Summarize, Print Totals
Enable Summarize and Print Totals
Inventory
Resource Group

Explanation:

Requirement

Configure the system to support the reports for the inventory control and warehouse teams.

Report option

Report ID
Resource ID
Detail Level
Inventory

Enable totals for the inventory close report.

Disable Summarize, Print Totals
Enable Summarize and Print Totals
Inventory
Resource Group

QUESTION NO: 3

営業担当者の指標要件を満たすようにシステムを設定する必要があります。システムをどのように構成すべきでしょうか？回答するには、適切なエンティティを正しい要件にドラッグしてください。

各エンティティは、1回だけ使用することも、複数回使用することも、まったく使用しないこともできます。コンテンツを表示するには、ペイン間の分割バーをドラッグするか、スクロールする必要がある場合があります。

注：正解ごとに1ポイントが加算されます。

Entities

Lead
Prospect
Opportunity
Customer

Answer Area

Requirement	Entity
Create a record for a company for which you provide a quote.	Entity
Create a record for a company that confirms an order.	Entity
Create a record for companies identified by sales representatives.	Entity

Answer:

Entities	Requirement	Entity
Lead	Create a record for a company for which you provide a quote.	Opportunity
Prospect	Create a record for a company that confirms an order.	Customer
Opportunity	Create a record for companies identified by sales representatives.	Lead
Customer		

Explanation:

Requirement	Entity
Create a record for a company for which you provide a quote.	Opportunity
Create a record for a company that confirms an order.	Customer
Create a record for companies identified by sales representatives.	Lead

QUESTION NO: 4

財務チーム向けに決済レポートを設定する必要があります。
どのプロセスを使用すべきでしょうか？回答するには、回答欄で適切なオプションを選択してください。

注：正解ごとに1ポイントが加算されます。

Requirement	Process
Identify Items that are not fully settled.	Print Inventory Close Log Run Recalculation Print Inventory Valuation Report Post Purchase Registrations
Reconcile differences between the expected and actual inventory values.	Post Purchase Invoices Post Purchase Registrations Post Sales Picking Lists Post Inventory Adjustments

Answer:

Answer Area

Requirement	Process
Identify Items that are not fully settled.	<div style="border: 1px solid black; padding: 2px;"> Print Inventory Close Log Run Recalculation Print Inventory Valuation Report Post Purchase Registrations </div>
Reconcile differences between the expected and actual inventory values.	<div style="border: 1px solid black; padding: 2px;"> Post Purchase Invoices Post Purchase Registrations Post Sales Picking Lists Post inventory adjustments </div>

Explanation:

Requirement	Process
Identify Items that are not fully settled.	<div style="border: 1px solid black; padding: 2px;"> <div style="text-align: right;">▼</div> Print Inventory Close Log Run Recalculation Print Inventory Valuation Report Post Purchase Registrations </div>
Reconcile differences between the expected and actual inventory values.	<div style="border: 1px solid black; padding: 2px;"> <div style="text-align: right;">▼</div> Post Purchase Invoices Post Purchase Registrations Post Sales Picking Lists Post inventory adjustments </div>

QUESTION NO: 5

地域ごとの販売要件に対応できるよう、システムを設定する必要があります。どのグループ課題を使用すべきでしょうか？回答するには、回答欄で適切な選択肢を選んでください。

注：正解ごとに1ポイントが加算されます。

Answer Area

Configurable object	Assignment
Customer	<div style="border: 1px solid black; padding: 2px;"> Commission group Price group Item group Customer group </div>
Sales Rep	<div style="border: 1px solid black; padding: 2px;"> Sales group Lead Prospect Item group </div>
Item	<div style="border: 1px solid black; padding: 2px;"> Commission group Item group Item Model group Customer group </div>

Answer:

Answer Area

Configurable object	Assignment
Customer	<div style="border: 1px solid black; padding: 2px;"> Commission group Price group Item group Customer group </div>
Sales Rep	<div style="border: 1px solid black; padding: 2px;"> Sales group Lead Prospect Item group </div>
Item	<div style="border: 1px solid black; padding: 2px;"> Commission group Item group Item Model group Customer group </div>

Explanation:

Configurable object	Assignment
Customer	<div style="border: 1px solid black; padding: 2px;"> <div style="border: 1px solid black; height: 20px; width: 100%;"></div> <div style="border: 1px solid black; padding: 2px;"> Commission group Price group Item group Customer group </div> </div>
Sales Rep	<div style="border: 1px solid black; padding: 2px;"> <div style="border: 1px solid black; height: 20px; width: 100%;"></div> <div style="border: 1px solid black; padding: 2px;"> Sales group Lead Prospect Item group </div> </div>
Item	<div style="border: 1px solid black; padding: 2px;"> <div style="border: 1px solid black; height: 20px; width: 100%;"></div> <div style="border: 1px solid black; padding: 2px;"> Commission group Item group Item Model group Customer group </div> </div>

Reference:

<https://www.dynamics-tips.com/sales-and-marketing/how-to-calculate-and-process-sales-commissions>

QUESTION NO: 6

カスタマーサービス担当者から報告された在庫問題の原因を特定する必要があります。

根本原因は何ですか？

- A. 在庫締め処理を実行します。
- B. 注文予約ボックスにチェックを入れると、数量が無効になります。
- C. 自動予約をオンにします。
- D. 注文された予約数量はマーキングによるものです。
- E. 自動予約をオフにします。

Answer: D

QUESTION NO: 7

陶器製造ラインをサポートするようにシステムを設定する必要があります。
まず最初に何をすべきでしょうか？

- A. 製品構成を使用して新しい製品を設定します。
- B. 追跡寸法を持つ新しい製品を作成します。
- C. 事前定義された製品バリエーションを使用して、新しい製品マスターを作成します。
- D. ストレージ寸法を指定して新しい製品を作成します。

Answer: C

Reference:

<https://docs.microsoft.com/en-us/dynamics365/supply-chain/pim/tasks/create-predefined-product-variants>

QUESTION NO: 8

在庫コストに関する要件に対処する必要があります。

目標を達成するための2つの方法は何ですか？それぞれの回答は完全な解決策を表しています。

注：正解ごとに1ポイント獲得できます。

- A. 原価計算シートを作成する
- B. 商品価格を設定します。
- C. マーキング付きFIFOを使用します。
- D. コスト計算バージョンを作成します。
- E. 販売注文から発注書を作成します。

Answer: C D

QUESTION NO: 9

陶器製品ラインをサポートするようにシステムを設定する必要があります。まず最初に何をすべきでしょうか？

- A. ストレージ寸法を持つ新しい製品を作成します。
- B. 事前定義された製品バリエーションを使用して、新しい製品マスターを作成します。
- C. 幸運な寸法を持つ新しい製品を作成します。
- D. 製品構成を使用して新しい製品を設定します。

Answer: B

QUESTION NO: 10

品目テストの要件を満たすようにシステムを設定する必要があります。

システムはどのように設定すればよいですか？回答するには、回答欄で適切なオプションを

選択してください。

注：正解ごとに1ポイントが加算されます。

Answer Area

Configuration	Value
Event type	Product Receipt Report as Finished Registration Ended
Quality specification	10 percent Fixed Quantity of 10 Fixed Quantity of 90 90 percent

Answer:

Answer Area

Configuration	Value
Event type	Product Receipt Report as Finished Registration Ended
Quality specification	10 percent Fixed Quantity of 10 Fixed Quantity of 90 90 percent

Explanation:

Answer Area

Configuration	Value
Event type	Product Receipt
Quality specification	10 percent

Reference:

<https://docs.microsoft.com/en-us/dynamics365/supply-chain/inventory/enable-quality-management>

QUESTION NO: 11

在庫原価計算の要件をサポートするようにシステムを設定する必要があります。実行すべき2つの行動はどれですか？それぞれの回答が完全な解決策を表しています。注：正解ごとに1ポイントが加算されます。

- A. すべてのアイテムのデフォルトのアイテムグループが1つ。
- B. 香水、陶磁器、その他の品目ごとに1つの品目グループ
- C. 1つのFIFOアイテムモデルグループと1つの標準アイテムモデルグループ
- D. 1つのFIFOアイテムグループ
- E. 各項目グループごとに1つの財務次元

Answer: B C

QUESTION NO: 12

在庫原価計算の要件に対応する必要があります。目標を達成するための2つの方法は何ですか？それぞれの回答は完全な解決策を表していません。注：正解ごとに1ポイントが加算されます。

- A. マーキング付きFIFOを使用します。
- B. 販売注文から発注書を作成します。
- C. 商品価格を設定します。
- D. コスト計算バージョンを作成します。
- E. 原価計算シートを作成します。

Answer: C E

QUESTION NO: 13

新しい香水シリーズに合わせて、構造を設定する必要があります。
まず最初に何をすべきでしょうか？

- A. 調達カテゴリ階層を作成します。
- B. ラック寸法を指定して新しい製品を作成します。
- C. ストレージ寸法を指定して新しい製品を作成します。
- D. 製品構成を作成します。
- E. 新しい製品マスターを設定し、シリアル追跡を実装します。

Answer: E

Topic 2, Organics Company Case Study

This is 3 cast study, Case studies are not timed separately. You can use as much exam time as you would like to complete each case. However, there may be additional case studies and sections on this exam. You must manage your time to ensure that you are able to complete all questions included on this exam in the time provided.

To answer the questions included in a case study, you will need to reference information that is provided in the case study. Case studies might contain exhibits and other resources that provide more information about the scenario that is described in the case study. Each question is independent of the other questions in this case study.

At the end of this case study, a review screen will appear. This screen allows you to review your answers and to make changes before you move to the next section of the exam. After you begin a new section, you cannot return to this section.

To start the case study

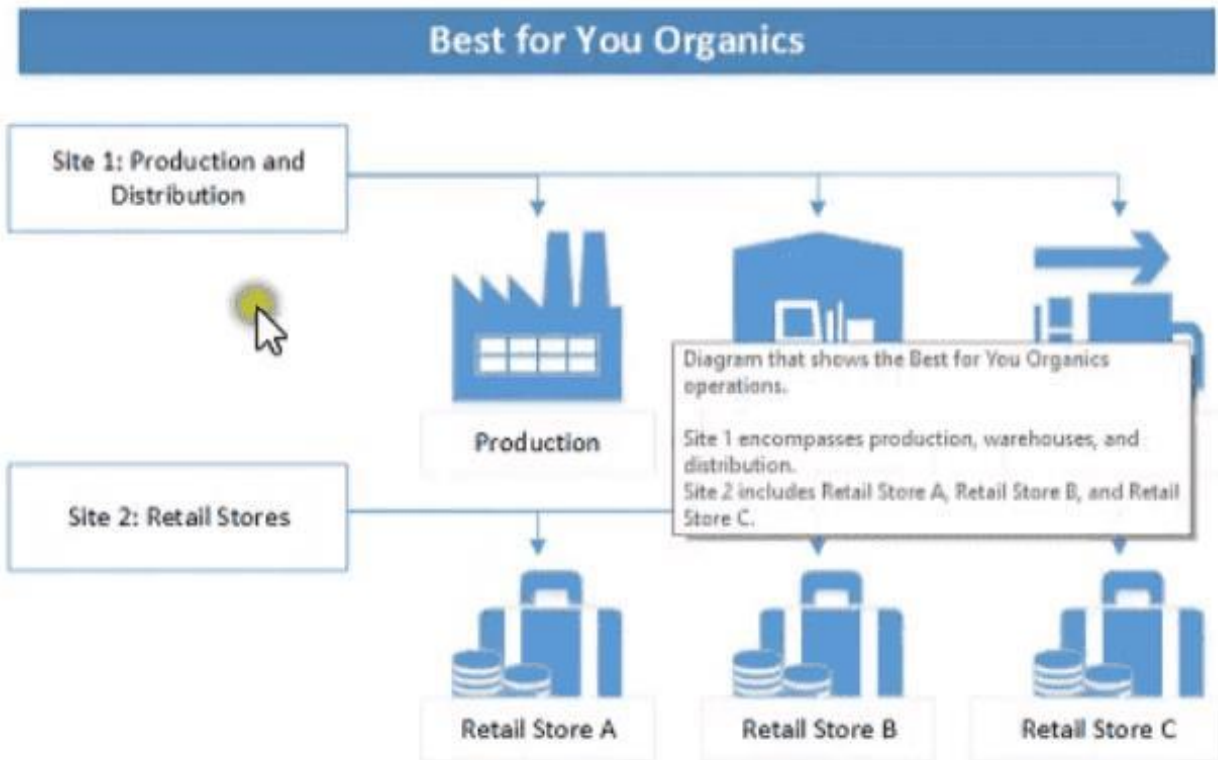
To display the first question in this case study, click the Next button. Use the buttons in the left pane to explore the content of the case study before you answer the questions. Clicking these buttons displays information such as business requirements, existing environment, and problem statements, if the case study has an All Information tab, note that the information displayed is identical to the information displayed on the subsequent tabs. When you are ready to answer a question, click the Question button to return to the question.

Background

Best for You Organics Company started as a home-based business. The founders began making handmade soaps and bath products in their kitchen. As sales increased, the business established a production facility and distribution center that supplies three retail stores.

Soaps and bath products are manufactured in the production facility and are stocked in the warehouse for distribution to the retail stores. Employees at retail stores use mobile point of sale (MPOS) tablet devices to sell the products to customers.

The company structure is a single legal entity with two sites as shown in the diagram below:



Current environment

Best for You Organics plans to introduce a new product line of face creams. Each product in the new line uses the same base ingredients but includes a different extract (for example, lime, avocado, kiwi). The marketing department is preparing to introduce the new product line. Minimal inventory will be held in the warehouse.

The company uses a cloud-based deployment of Dynamics 365 Supply Chain Management to manage finances for all company operations and locations. The company does not use Bill of Materials (BOM) versioning.

The production and warehouse facility is set up with the following organizational hierarchy:

User	Role
OpsManager	Operations manager
Employee1	Inventory control
StoreManager	Store manager
Employee2	Receiving clerk
Employee3	Shipping clerk
Employee4	Warehouse worker
Employee5	Production worker
Employee6	Store order clerk

External customers include:

- * Customer A: a walk-in store customer (business-to-consumer)
- * Customers: a customer with an existing account (business-to-business)

External vendors include:

- * VendorA a trucking company
- * VendorB: a raw materials supplier

General

The new product line must be set up in the system and readily available for sale when the

company introduces the product line to the public at an upcoming trade show.

Production

You must configure the system to produce the new products:

- * Ensure that the warehouse stocks the minimum quantities of raw materials to produce the products,
- * Use a single version per item.
- * Implement FIFO inventory valuation methods.
- * Track raw and finished goods using different General ledger accounts.
- * Use a primary location to determine where to stock product in the warehouse.
- * Configure alternate locations in the warehouse to hold overstock products and refill the primary location as- needed.

Shipments

You identify the following requirements related to shipping:

- * Ship product to retail stores weekly.
- * Stores require a packing slip to check in merchandise. Drivers require transport documentation and charge per mile to the stores.
- * Shipments to Store1 must be scheduled for Monday, Wednesday, or Friday, Store1 will sometimes pick up their own deliveries when an order is small because they have their own van Shipments to Store2 and Store3 must be scheduled for Tuesday or Thursday.
- * You must transmit Advance Shipping Notifications (ASNs) to the stores prior to deliveries.
- * Set up the system configuration to allow for store transfers.
- * Set up the system so that products may be shipped to the retail stores as bulk orders.
- * Set up the transport providers to deliver products from the warehouse to the retail stores.

Reporting

Once the new products are available in stores, review 30 days of historical sales data from day-to-day transactions will determine the reorder quantities. Set up reporting to allow the product line to be costed and tracked independent of other items.

Pricing and inventory

You identify the following requirements related to pricing and inventory:

- * Determine the Quantity of the new products that can be produced and ready for sale within the first 90 days.

Ensure that specialty packaging is on hand for retail sales. The packaging must be shipped directly to the stores from the vendor.

- * Stores must not inventory the packaging materials. Stores must maintain a 50-day supply of specialty packaging materials. Stores must reorder packaging materials as needed.
- * Retail store customers must pay full retail price, Resellers must receive a 10 percent discount off the list price.

QUESTION NO: 14

新しい項目については、財務関連の要素を設定する必要があります。

どの2つの行動をとるべきでしょうか？それぞれの正解は、解決策の一部を示しています。

注：正解ごとに1ポイントが加算されます。

A. FIFO アイテム モデル グループにアイテムを割り当てます。

B. 原材料を標準原価項目モデルグループに割り当てます。完成品をFIFO項目モデルグループに割り当てます。

C. 異なる勘定科目を使用して、原材料と完成品の品目モデルグループを作成します。これらのグループにアイテムを割り当ててください。

D.

原材料を標準原価項目グループに割り当てます。完成品をFIFO項目グループに割り当てます。

E.

異なる勘定科目を使用して、原材料と完成品の品目グループを作成します。これらのグループに品目を割り当てます。

Answer: A E

QUESTION NO: 15

新しい商品の再注文を設定する必要があります。

どの2つの行動をとるべきでしょうか？それぞれの正解は、解決策の一部を示しています。

注：正解ごとに1ポイントが加算されます。

A. 原材料用と完成品用にそれぞれ1つのカバレッジグループを作成します。

B. 倉庫の品目カバレッジ手動フラグを「はい」に設定します。

C. 原材料、完成品、小売包装用に個別のカバレッジグループを作成します。

D. 倉庫の品目カバレッジ手動フラグを「いいえ」に設定します。

E.

小売包装品用に1つのカバレッジグループを作成し、倉庫内の品用に別のカバレッジグループを作成します。

Answer: C D

Reference:

<https://docs.microsoft.com/en-us/dynamics365/supply-chain/master-planning/coverage-settings>

QUESTION NO: 16

従業員1は新しい部品表(BOM)を設定する必要があります。

従業員はどの3つの行動をとるべきですか！正解はそれぞれ解決策の一部を示しています。

注：正解ごとに1ポイントが加算されます。

A. BOMを有効化します。

B. Store1、Store2、および Store3 の新しい BOM を作成します。

C. Site1 専用の新しい BOM を作成します。

D. 原材料を部品表に追加して承認します。

E. 生の指令をBOMに追加し、BOMバージョンを承認します。

Answer: A C E

Reference:

<https://docs.microsoft.com/en-us/dynamics365/supply-chain/production-control/bill-of-material-bom>

QUESTION NO: 17

従業員3は配達のスケジュールを立てる必要があります。

従業員3は、運送業者に店舗2へ商品を配送してもらうための計画をどのように立てるべきでしょうか？回答欄で適切な選択肢を選んでください。

注：正解ごとに1ポイントが加算されます。

Answer Area

Step	Action
Create appointments.	Select Load for Store2, Outbound, Status. Select All loads, Outbound, Status. Select Load for Store2, Inbound, Status. Select Transfer orders, Inbound, Status.
Add shipping details.	Select Site, Warehouse, Shipping carrier. Select Site, Warehouse, Shipping carrier, Allow customer pick up. Select Site, Warehouse, Broker ID. Select broker ID, tractor ID, trailer ID, allow customer pick up.

Answer:

Answer Area

Step	Action
Create appointments.	Select Load for Store2, Outbound, Status. Select All loads, Outbound, Status. Select Load for Store2, Inbound, Status. Select Transfer orders, Inbound, Status.
Add shipping details.	Select Site, Warehouse, Shipping carrier. Select Site, Warehouse, Shipping carrier, Allow customer pick up. Select Site, Warehouse, Broker ID. Select broker ID, tractor ID, trailer ID, allow customer pick up.

Explanation:

Step

Action

Create appointments.

Select Load for Store2, Outbound, Status.
Select All loads, Outbound, Status.
Select Load for Store2, Inbound, Status.
Select Transfer orders, Inbound, Status.

Add shipping details.

Select Site, Warehouse, Shipping carrier.
Select Site, Warehouse, Shipping carrier, Allow customer pick up.
Select Site, Warehouse, Broker ID.
Select broker ID, tractor ID, trailer ID, allow customer pick up.

QUESTION NO: 18

従業員1は、製品ラインに新しいアイテムを設定する必要があります。

従業員1はどの2つの行動をとるべきでしょうか？それぞれの正解は、解決策の一部を示しています。

注：正解ごとに1ポイントが加算されます。

- A. 新しい完成品を作成し、法人にリリースする
- B. 新しい原材料を作成し、法人にリリースします。
- C. 事前定義されたバリエーションを使用して新しい完成品を作成し、法人にリリースします。
- D. 新規完成品を作成し、法人に引き渡します。これらの品目には原材料は必要ありません。
- E. バリエーション付きの新しい原材料を作成し、法人にリリースします。

Answer: B C

QUESTION NO: 19

商品価格と割引を設定する必要があります。

セットアップを完了するにはどうすればよいでしょうか？回答欄で適切なオプションを選択してください。

注：正解ごとに1ポイントが加算されます。

Option	Action
Create price groups.	<div style="border: 1px solid black; padding: 2px;"> <div style="text-align: right; border-bottom: 1px solid black;">▼</div> <div style="padding: 2px;"> <p>Create price groups for retail customers and resellers.</p> <p>Create a price group for all customers.</p> <p>Create a price group for the warehouse.</p> <p>Create price groups for items and vendors.</p> </div> </div>
Create discounts.	<div style="border: 1px solid black; padding: 2px;"> <div style="text-align: right; border-bottom: 1px solid black;">▼</div> <div style="padding: 2px;"> <p>Create trade agreement for 10% line discount on Resellers.</p> <p>Create trade agreement for 10% line discount on Retail Customers.</p> <p>Create trade agreement for 90% line discount on Resellers.</p> <p>Create trade agreement for 90% line discount on Retail Customers.</p> </div> </div>
Assign price group.	<div style="border: 1px solid black; padding: 2px;"> <div style="text-align: right; border-bottom: 1px solid black;">▼</div> <div style="padding: 2px;"> <p>Assign a price group to Customers as 1:1</p> <p>Assign a price group to Vendors as 1:1</p> <p>Assign two or more price groups to customers.</p> <p>Assign two or more price groups to vendors.</p> </div> </div>

Answer:

Option	Action
Create price groups.	<ul style="list-style-type: none"> Create price groups for retail customers and resellers. Create a price group for all customers. Create a price group for the warehouse. Create price groups for items and vendors.
Create discounts.	<ul style="list-style-type: none"> Create trade agreement for 10% line discount on Resellers. Create trade agreement for 10% line discount on Retail Customers. Create trade agreement for 90% line discount on Resellers. Create trade agreement for 90% line discount on Retail Customers.
Assign price group.	<ul style="list-style-type: none"> Assign a price group to Customers as 1:1 Assign a price group to Vendors as 1:1 Assign two or more price groups to customers. Assign two or more price groups to vendors.

Explanation:

Option	Action
Create price groups.	<ul style="list-style-type: none"> Create price groups for retail customers and resellers. Create a price group for all customers. Create a price group for the warehouse. Create price groups for items and vendors.
Create discounts.	<ul style="list-style-type: none"> Create trade agreement for 10% line discount on Resellers. Create trade agreement for 10% line discount on Retail Customers. Create trade agreement for 90% line discount on Resellers. Create trade agreement for 90% line discount on Retail Customers.
Assign price group.	<ul style="list-style-type: none"> Assign a price group to Customers as 1:1 Assign a price group to Vendors as 1:1 Assign two or more price groups to customers. Assign two or more price groups to vendors.

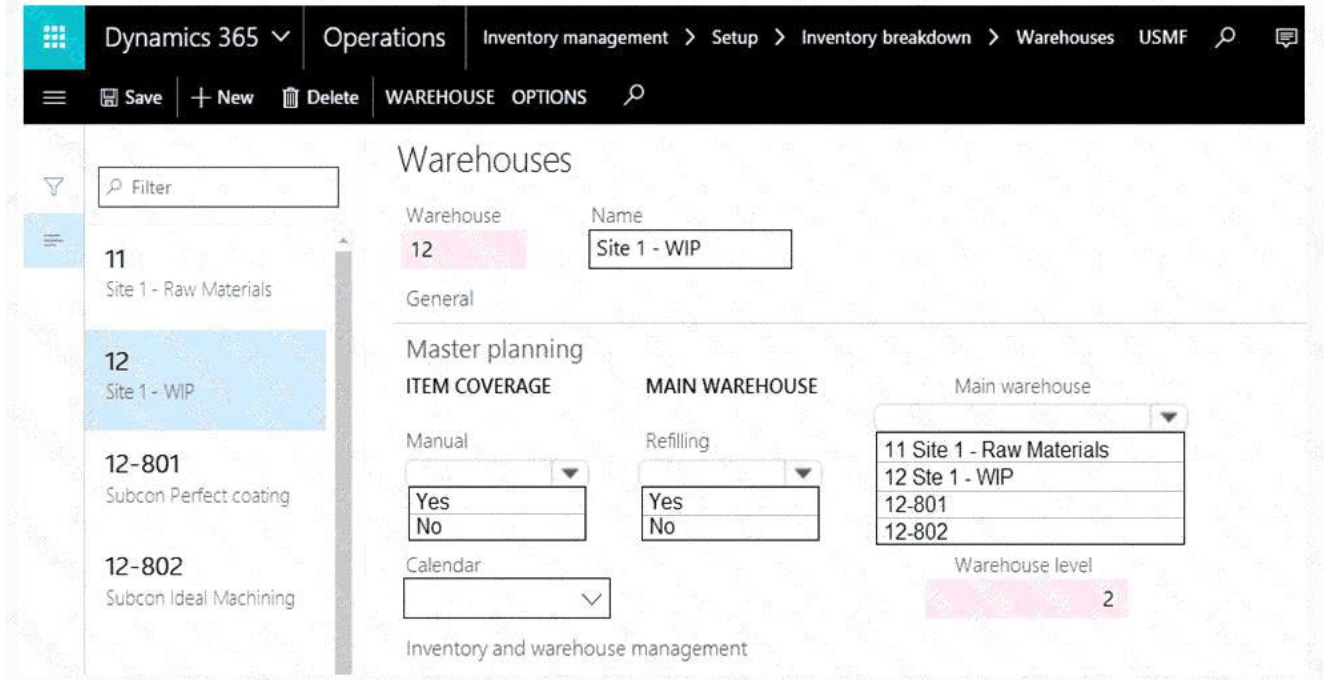
Reference:

<https://docs.microsoft.com/en-us/dynamics365/supply-chain/sales-marketing/tasks/create-new-trade-agreement>

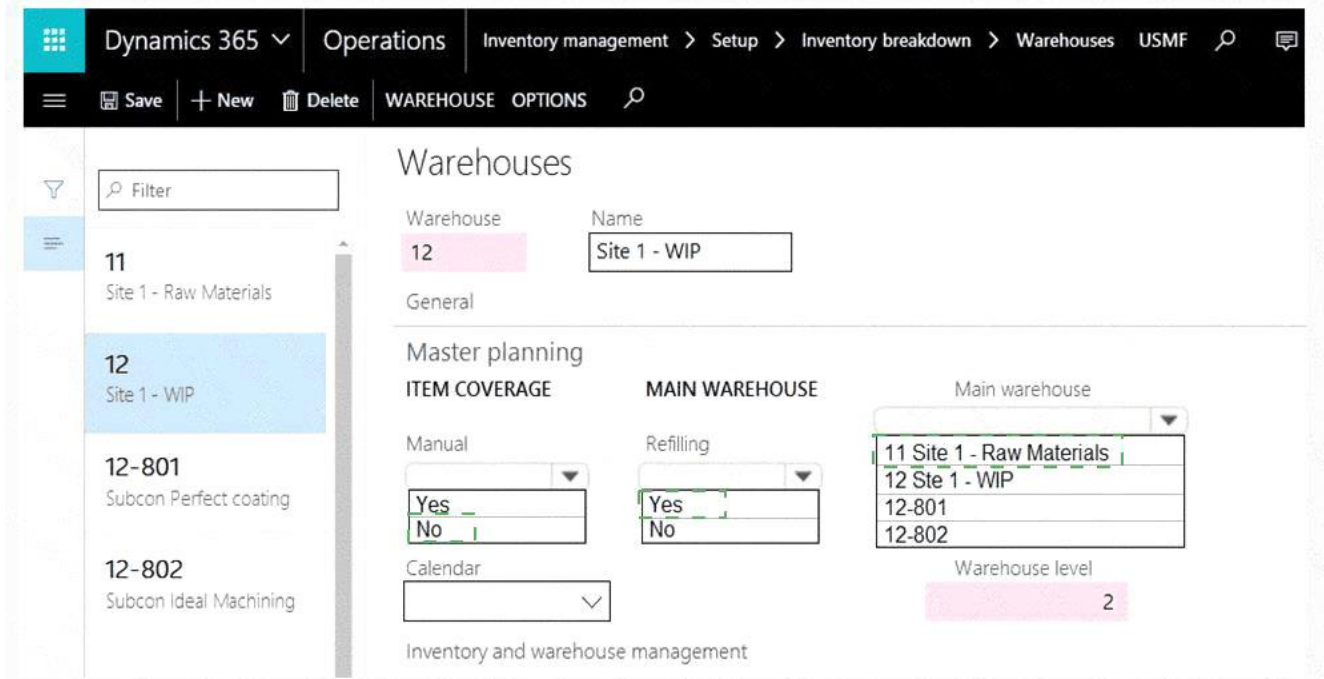
QUESTION NO: 20

品目ごとに倉庫在庫の自動補充を設定する必要があります。
 セットアップを完了するにはどうすればよいでしょうか？回答欄で適切なオプションを選択してください。

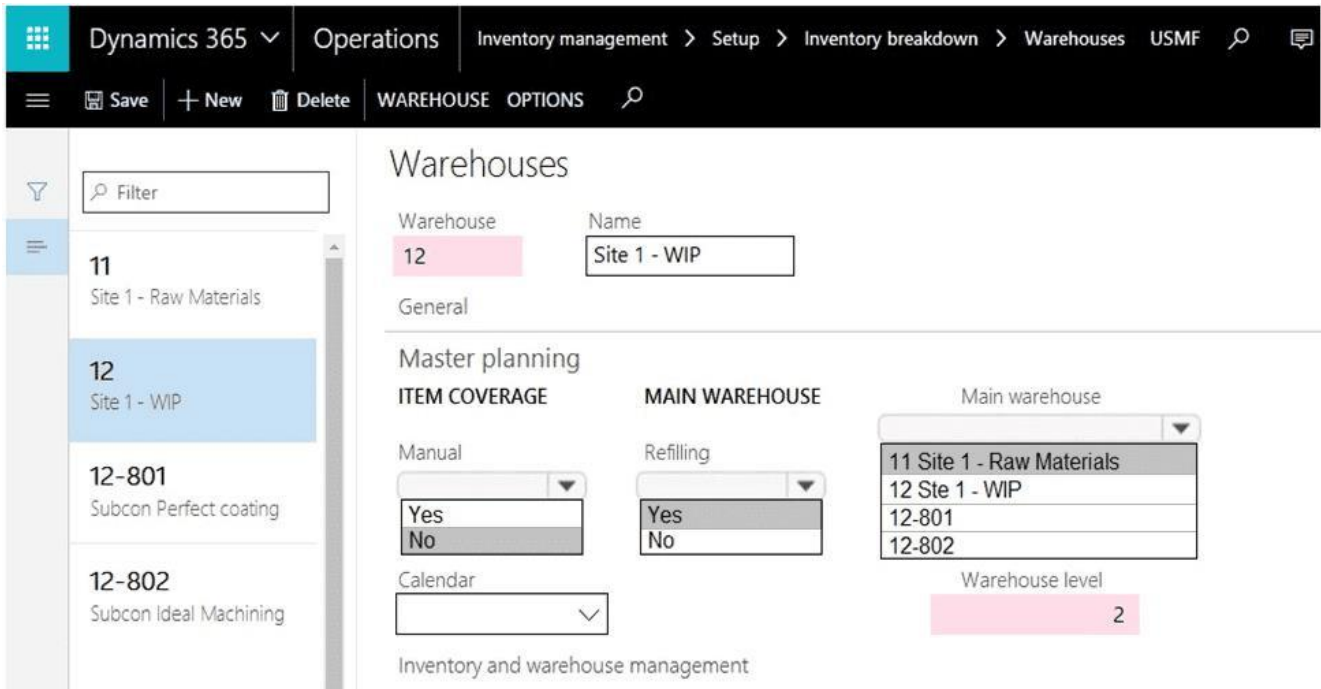
注：正解ごとに1ポイントが加算されます。



Answer:



Explanation:



QUESTION NO: 21

ベンダー1から小売店へ製品を配送するための輸送業者を設定する必要があります。設定を完了するにはどうすればよいでしょうか？回答欄で適切なオプションを選択してください。
注：正解ごとに1ポイントが加算されます。

Configuration option

Value

Rating profile

	▼
Rating profile with mileage base rating engine	
Rating profile with weight base engine rating	
Mode of Delivery with weight base rating engine	

Carrier

	▼
Vendor, Carrier, Rating profile	
Customer, Carrier, Rating profile	
Broker, Carrier, Shipment	
Vendor, Carrier, Load	

Answer:

Configuration option	Value
Rating profile	<div style="border: 1px solid black; padding: 2px;"> <div style="background-color: #e0e0e0; padding: 2px; display: flex; justify-content: space-between; align-items: center;"> ▼ </div> <div style="padding: 2px;"> <p>Rating profile with mileage base rating engine</p> <p>Rating profile with weight base engine rating</p> <p>Mode of Delivery with weight base rating engine</p> </div> </div>
Carrier	<div style="border: 1px solid black; padding: 2px;"> <div style="background-color: #e0e0e0; padding: 2px; display: flex; justify-content: space-between; align-items: center;"> ▼ </div> <div style="padding: 2px;"> <p>Vendor, Carrier, Rating profile</p> <p>Customer, Carrier, Rating profile</p> <p>Broker, Carrier, Shipment</p> <p>Vendor, Carrier, Load</p> </div> </div>

Explanation:

Configuration option	Value
Rating profile	<div style="border: 1px solid black; padding: 2px;"> <div style="background-color: #e0e0e0; padding: 2px; display: flex; justify-content: space-between; align-items: center;"> ▼ </div> <div style="padding: 2px;"> <p>Rating profile with mileage base rating engine</p> <p>Rating profile with weight base engine rating</p> <p>Mode of Delivery with weight base rating engine</p> </div> </div>
Carrier	<div style="border: 1px solid black; padding: 2px;"> <div style="background-color: #e0e0e0; padding: 2px; display: flex; justify-content: space-between; align-items: center;"> ▼ </div> <div style="padding: 2px;"> <p>Vendor, Carrier, Rating profile</p> <p>Customer, Carrier, Rating profile</p> <p>Broker, Carrier, Shipment</p> <p>Vendor, Carrier, Load</p> </div> </div>

Reference:

<https://docs.microsoft.com/en-us/dynamics365/supply-chain/transportation/tasks/set-up-shipping-carriers>

QUESTION NO: 22

出荷を完了する必要があります。

- A. 積荷を確認し、梱包明細書と船荷証券を作成します。
- B. 出荷荷物の作業を生成するウェブを作成し、ASNを送信します。

- C. 出荷を確認し、ピッキング/投入作業を生成します。
- D. 出荷書類を印刷する作業を作成し、ASN を送信します。

Answer: B

Reference:

<https://docs.microsoft.com/en-us/dynamics365/supply-chain/warehousing/wave-processing>

QUESTION NO: 23

注文をまとめて、店舗へのお荷料金を査定する準備をする必要があります。
 セットアップを完了するにはどうすればよいでしょうか？回答欄で適切なオプションを選択してください。

注：正解ごとに1ポイントが加算されます。

Action	Value
Configure shipment setup.	<ul style="list-style-type: none"> Enable the Transportation management and Consolidate shipments parameters. Create a proposed load. Assign a rate engine to a load. Create a proposed load. Enable the Consolidate shipments parameter. Assign an item to a proposed load. Enable items to use Transportation management. Assign items to a proposed load.
Consolidate shipments.	<ul style="list-style-type: none"> Open Shipments, select Lines, and consolidate shipments for the same destination. Open Shipments, select Loads, and consolidate leads for the same destination. Open Loads, select Shipments, and consolidate shipments for the same load. Open Loads, select Shipments, and consolidate shipments for the same destination.

Answer:

Action	Value
Configure shipment setup.	<ul style="list-style-type: none"> Enable the Transportation management and Consolidate shipments parameters. Create a proposed load. Assign a rate engine to a load. Create a proposed load. Enable the Consolidate shipments parameter. Assign an item to a proposed load. Enable items to use Transportation management. Assign items to a proposed load.
Consolidate shipments.	<ul style="list-style-type: none"> Open Shipments, select Lines, and consolidate shipments for the same destination. Open Shipments, select Loads, and consolidate leads for the same destination. Open Loads, select Shipments, and consolidate shipments for the same load. Open Loads, select Shipments, and consolidate shipments for the same destination.

Explanation:

Action	Value
Configure shipment setup.	<ul style="list-style-type: none"> Enable the Transportation management and Consolidate shipments parameters. Create a proposed load. Assign a rate engine to a load. Create a proposed load. Enable the Consolidate shipments parameter. Assign an item to a proposed load. Enable items to use Transportation management. Assign items to a proposed load.
Consolidate shipments.	<ul style="list-style-type: none"> Open Shipments, select Lines, and consolidate shipments for the same destination. Open Shipments, select Loads, and consolidate leads for the same destination. Open Loads, select Shipments, and consolidate shipments for the same load. Open Loads, select Shipments, and consolidate shipments for the same destination.

QUESTION NO: 24

小売店ごとに在庫レベルを設定する必要があります。

どの2つの行動をとるべきでしょうか？それぞれの正解は、解決策の一部を示しています。

注：正解ごとに1ポイントが加算されます。

A. 小売店の初期在庫レベルの手動予測を入力します。

B.

フェイスマスクの販売開始から最初の1か月後、過去30日間の倉庫販売注文を確認して需要予測を作成します。

C.

フェイスマスクの販売開始から最初の1か月後、過去30日間の店舗売上をレビューして需要予測を作成します。

D.

フェイスマスクの販売開始から最初の1か月後、倉庫向けの予測と小売店向けの2つ目の予測を作成します。

E.

フェイスマスクの販売開始から最初の1か月後、倉庫の手動予測を作成し、店舗の需要予測を自動的に生成します。

Answer: A C

QUESTION NO: 25

出荷を完了する必要があります。

あなたはどうすべきでしょうか？

A. 出荷書類を印刷するための作業を作成し、ASNを送信します。

B. 積荷を確認し、ピッキングリストを生成し、ASNを送信します。

C. 積荷を確認し、梱包明細書と船荷証券を作成します。

D. 出荷を確認し、ピッキングリストと船荷証券を作成します。

Answer: B

QUESTION NO: 26

新しいロケーション指示を作成する必要があります。

どの値を使用すべきですか？回答するには、回答欄で適切なオプションを選択してください。

注：正解ごとに1ポイントが加算されます。

Action	Value
Create location directive	<div style="border: 1px solid black; padding: 2px;">▼</div> <div style="border: 1px solid black; padding: 2px;">Assign Sequence, Work Type, Site, Warehouse, Directive Code</div> <div style="border: 1px solid black; padding: 2px;">Assign Sequence, Work Type, Site, Warehouse, Location</div> <div style="border: 1px solid black; padding: 2px;">Assign Site, Warehouse, Location and item</div> <div style="border: 1px solid black; padding: 2px;">Assign Site, Warehouse, Work Template</div>
Define location in Location Directive Action	<div style="border: 1px solid black; padding: 2px;">▼</div> <div style="border: 1px solid black; padding: 2px;">Fixed Locations for the first line, fixed + non-fixed for the second line. Create a query to define location ranges.</div> <div style="border: 1px solid black; padding: 2px;">Create a query to define location ranges.</div> <div style="border: 1px solid black; padding: 2px;">Create a query for fixed locations.</div> <div style="border: 1px solid black; padding: 2px;">Create a query for non-fixed location ranges.</div>

Answer:

Action	Value
Create location directive	<div style="border: 1px solid black; padding: 2px;">▼</div> <div style="border: 1px solid black; padding: 2px;">Assign Sequence, Work Type, Site, Warehouse, Directive Code</div> <div style="border: 1px solid black; padding: 2px;">Assign Sequence, Work Type, Site, Warehouse, Location</div> <div style="border: 1px solid black; padding: 2px;">Assign Site, Warehouse, Location and item</div> <div style="border: 1px solid black; padding: 2px;">Assign Site, Warehouse, Work Template</div>
Define location in Location Directive Action	<div style="border: 1px solid black; padding: 2px;">▼</div> <div style="border: 1px solid black; padding: 2px;">Fixed Locations for the first line, fixed + non-fixed for the second line. Create a query to define location ranges.</div> <div style="border: 1px solid black; padding: 2px;">Create a query to define location ranges.</div> <div style="border: 1px solid black; padding: 2px;">Create a query for fixed locations.</div> <div style="border: 1px solid black; padding: 2px;">Create a query for non-fixed location ranges.</div>

Explanation:

Action	Value										
Create location directive	<table border="1"> <tr> <td></td> <td>▼</td> </tr> <tr> <td colspan="2">Assign Sequence, Work Type, Site, Warehouse, Directive Code</td> </tr> <tr> <td colspan="2">Assign Sequence, Work Type, Site, Warehouse, Location</td> </tr> <tr> <td colspan="2">Assign Site, Warehouse, Location and item</td> </tr> <tr> <td colspan="2">Assign Site, Warehouse, Work Template</td> </tr> </table>		▼	Assign Sequence, Work Type, Site, Warehouse, Directive Code		Assign Sequence, Work Type, Site, Warehouse, Location		Assign Site, Warehouse, Location and item		Assign Site, Warehouse, Work Template	
	▼										
Assign Sequence, Work Type, Site, Warehouse, Directive Code											
Assign Sequence, Work Type, Site, Warehouse, Location											
Assign Site, Warehouse, Location and item											
Assign Site, Warehouse, Work Template											
Define location in Location Directive Action	<table border="1"> <tr> <td></td> <td>▼</td> </tr> <tr> <td colspan="2">Fixed Locations for the first line, fixed + non-fixed for the second line. Create a query to define location ranges.</td> </tr> <tr> <td colspan="2">Create a query to define location ranges.</td> </tr> <tr> <td colspan="2">Create a query for fixed locations.</td> </tr> <tr> <td colspan="2">Create a query for non-fixed location ranges.</td> </tr> </table>		▼	Fixed Locations for the first line, fixed + non-fixed for the second line. Create a query to define location ranges.		Create a query to define location ranges.		Create a query for fixed locations.		Create a query for non-fixed location ranges.	
	▼										
Fixed Locations for the first line, fixed + non-fixed for the second line. Create a query to define location ranges.											
Create a query to define location ranges.											
Create a query for fixed locations.											
Create a query for non-fixed location ranges.											

Reference:

<https://docs.microsoft.com/en-us/dynamicsax-2012/appuser-itpro/create-a-location-directive>
<https://docs.microsoft.com/en-us/dynamics365/supply-chain/transportation/tasks/set-up-location-directive-purchase-order-put-away>

Topic 3, Adventure Works Cycles

This is a case study. Case studies are not timed separately. You can use as much exam time as you would like to complete each case. However, there may be additional case studies and sections on this exam. You must manage your time to ensure that you are able to complete all questions included on this exam in the time provided.

To answer the questions included in a case study, you will need to reference information that is provided in the case study. Case studies might contain exhibits and other resources that provide more information about the scenario that is described in the case study. Each question is independent of the other questions in this case study.

At the end of this case study, a review screen will appear. This screen allows you to review your answers and to make changes before you move to the next section of the exam. After you begin a new section, you cannot return to this section.

To start the case study

To display the first question in this case study, click the Next button. Use the buttons in the left pane to explore the content of the case study before you answer the questions. Clicking these buttons displays information such as business requirements, existing environment, and problem statements. If the case study has an All Information tab, note that the information displayed is identical to the information displayed on the subsequent tabs. When you are ready to answer a question, click the Question button to return to the question.

Background

Adventure Works Cycles builds stock and custom mountain bikes and is headquartered in San Diego. It has the following assembly and warehouse locations:

Denver, Colorado, United States

San Diego, California, United States

Budapest, Hungary

Most manufacturing is outsourced, with each facility only assembling the bikes. Parts are

stocked at all facilities and may be transferred between warehouses or legal entities. All of the parts are at standard cost.

Current environment. Organizational structure

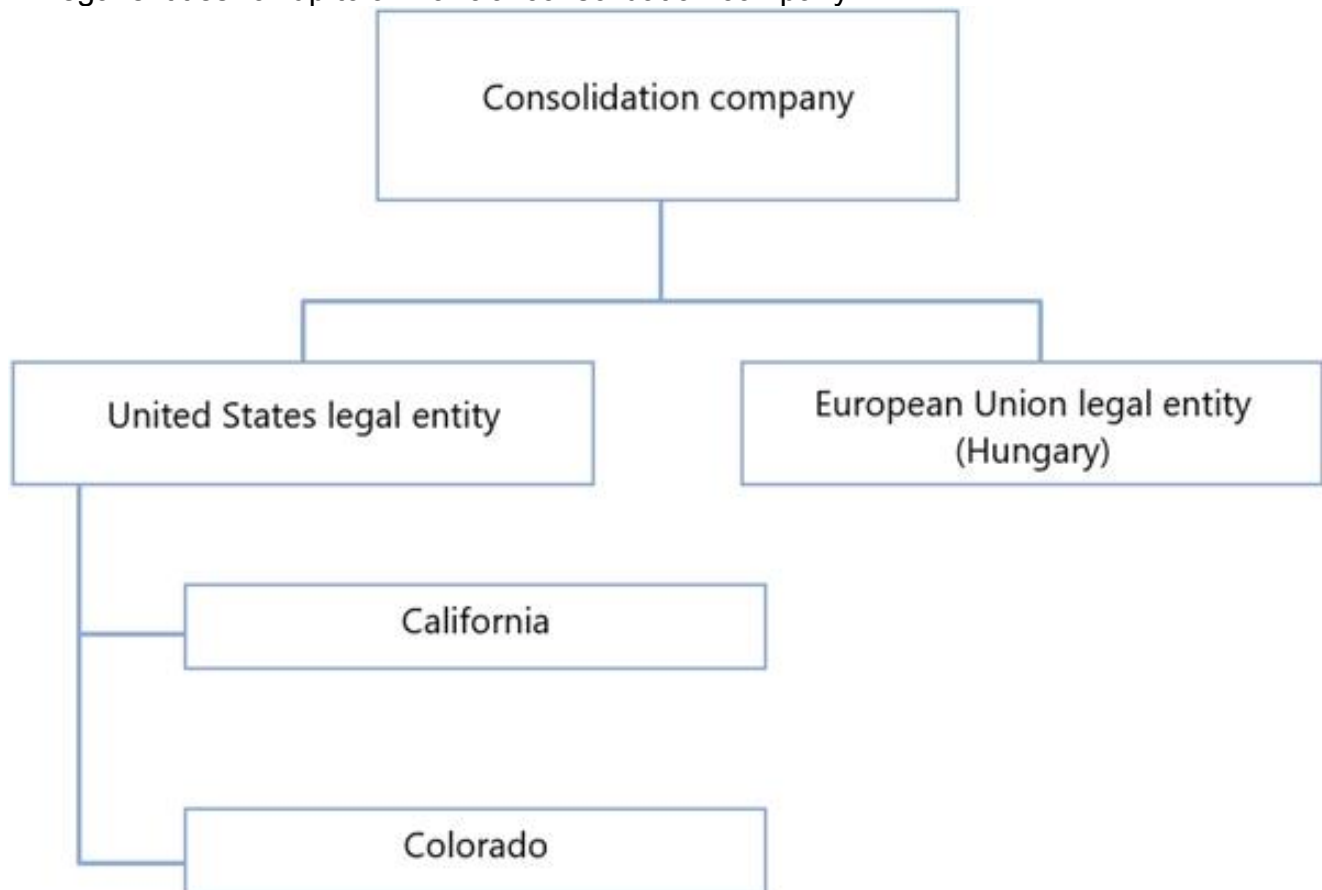
The following diagram shows the structure of Adventure Works Cycles.

Each of the physical locations in the United States (US) is a warehouse.

Hungary assembles and distributes products to the rest of the European Union (EU).

The EU legal entity is expected to add additional warehouse locations.

All legal entities roll up to a financial consolidation company.



Current environment. Purchasing

Higher quality tires that are used in new orders have become popular. Due to the volume of orders, the company wants to negotiate pricing with VendorC. The vendor agrees to a discounted price for 500 tires purchased within the next six months. Once the 500 tires have been purchased, the discount will be re-evaluated based on demand.

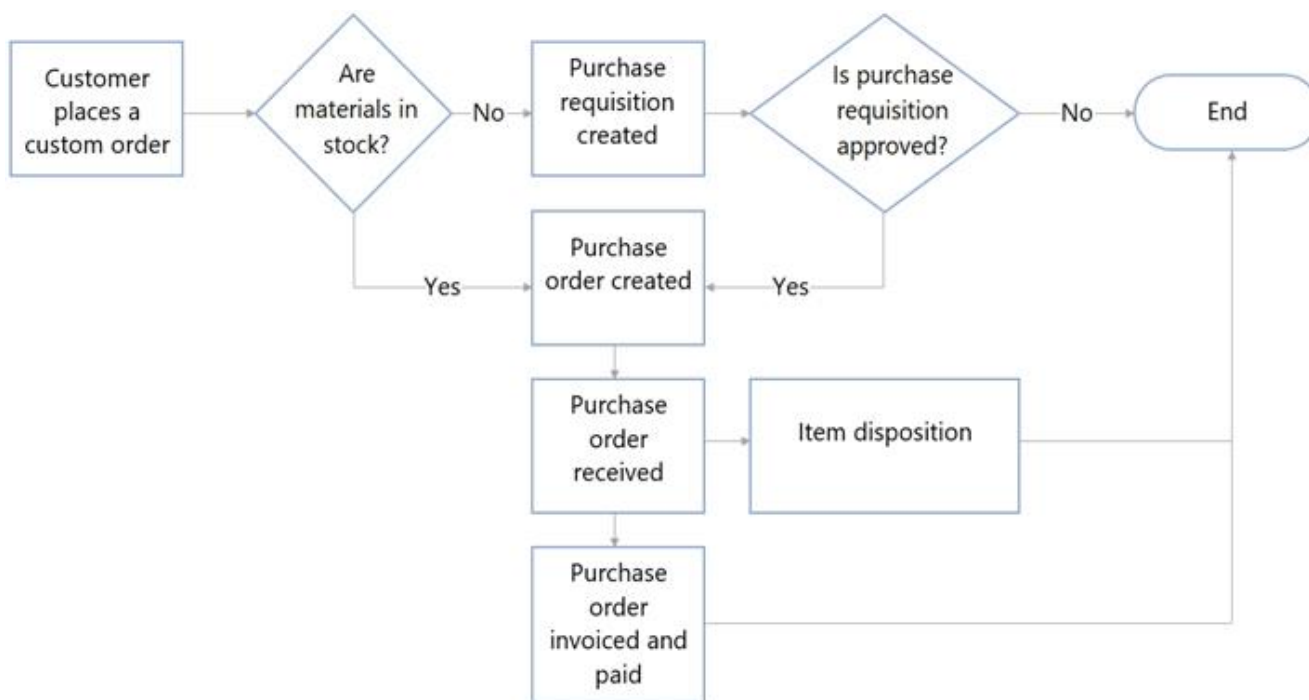
Once a purchase is approved, for audit purposes it cannot be changed.

Whenever possible, parts are purchased from vendors also within the EU. A purchase order was placed for a bike seat manufacturer in Italy.

Parts for custom orders may not always be kept in stock and will need to be procured.

Current environment. Purchasing requisitions

The following flow chart depicts the purchase requisition process:



Requirements. Purchasing

Items for purchase requisitions are governed by each country. Each of the country-specific products will be grouped together for selection.

Purchase orders must follow the requisition process.

All existing purchase orders for brakes must account for the change to VendorB.

Requirements. Inventory

Standard costs are based on purchase fluctuations within a single month.

Tires use floating zones due to limited warehouse space.

Requirements. Operations

Due to recent brake failures, Adventure Works Cycles plans to purchase brakes from VendorB instead of VendorA. Although the brakes from Vendor B will continue to use the same item number as the brakes from VendorA, the price is slightly higher from VendorB. Adventure Works Cycles will pay list price from VendorB. The order for VendorB needs approval and the usual approver for purchase requisitions is on vacation.

All brakes from VendorA that are in stock must be tested. The process for brake testing must be implemented for all inbound orders. Quality orders must be automatically created upon receipt of the first shipment against a purchase order only.

UserC needs to consolidate brake inventory after it has been cleared for sale.

Ordering of the new brakes order will incur an additional cost because it is a rush order.

Requirements. Custom orders

Custom orders are placed for items that do not exist in the item master.

Hungary does not process custom orders.

The United States does process custom paint orders. Most custom paint colors are special order and require purchase requisitions.

Quotes must be obtained from a minimum of two suppliers per company policy and compared for the shipping, costs, and other variables. Quotes will not be selected based on lowest price only.

Issues

A special order for 26 high-end tires is received. This item is no longer in stock from the

current vendor.

Goods have been received in stock, but the matching invoice has not yet been received at the time of month close.

UserA needs to set up pricing for the items purchased from VendorC and ensure that accounting validates the receipt and invoice against the agreement.

UserB needs to send out a request for quotation (RFQ) for custom paint. The vendor will be selected based on pricing, volume discounts, and lead time.

QUESTION NO: 27

倉庫内のどこにタイヤを保管するかを明確にする必要があります。

位置情報の設定はどのように行うべきですか？回答するには、回答欄で適切なオプションを選択してください。

注：正解ごとに1ポイントが加算されます。

Parameter

Value

Query filter

	▼
Item code and warehouse	
Item code and zone	
Warehouse only	
Zone only	

Location Directive action

	▼
Fixed only	
Fixed and non-fixed	
Fixed with product variants	

Answer:

Parameter

Value

Query filter

	▼
Item code and warehouse	
Item code and zone	
Warehouse only	
Zone only	

Location Directive action

	▼
Fixed only	
Fixed and non-fixed	
Fixed with product variants	

Explanation:

Parameter

Value

Query filter

	▼
Item code and warehouse	
Item code and zone	
Warehouse only	
Zone only	

Location Directive action

	▼
Fixed only	
Fixed and non-fixed	
Fixed with product variants	

QUESTION NO: 28

ベンダーとの交渉は完了しました。
 タイヤの新しい価格を設定する必要があります。

ビジネス要件を満たすために、どのような設定を行うべきですか？回答するには、該当箇所
で適切なオプションを選択してください。
注：正解ごとに1ポイントが加算されます。

Setting	Value										
Agreement type	<table border="1"> <tr> <td></td> <td style="text-align: right;">▼</td> </tr> <tr> <td colspan="2">Purchase</td> </tr> <tr> <td colspan="2">Sales</td> </tr> <tr> <td colspan="2">Trade</td> </tr> </table>		▼	Purchase		Sales		Trade			
	▼										
Purchase											
Sales											
Trade											
Date	<table border="1"> <tr> <td></td> <td style="text-align: right;">▼</td> </tr> <tr> <td colspan="2">Expiration date</td> </tr> <tr> <td colspan="2">From date</td> </tr> <tr> <td colspan="2">Start date</td> </tr> <tr> <td colspan="2">To date</td> </tr> </table>		▼	Expiration date		From date		Start date		To date	
	▼										
Expiration date											
From date											
Start date											
To date											

Answer:

Setting	Value										
Agreement type	<table border="1"> <tr> <td></td> <td style="text-align: right;">▼</td> </tr> <tr> <td colspan="2">Purchase</td> </tr> <tr> <td colspan="2">Sales</td> </tr> <tr> <td colspan="2">Trade</td> </tr> </table>		▼	Purchase		Sales		Trade			
	▼										
Purchase											
Sales											
Trade											
Date	<table border="1"> <tr> <td></td> <td style="text-align: right;">▼</td> </tr> <tr> <td colspan="2">Expiration date</td> </tr> <tr> <td colspan="2">From date</td> </tr> <tr> <td colspan="2">Start date</td> </tr> <tr> <td colspan="2">To date</td> </tr> </table>		▼	Expiration date		From date		Start date		To date	
	▼										
Expiration date											
From date											
Start date											
To date											

Explanation:

Setting	Value										
Agreement type	<table border="1"> <tr> <td></td> <td style="text-align: right;">▼</td> </tr> <tr> <td colspan="2" style="background-color: #cccccc;">Purchase</td> </tr> <tr> <td colspan="2">Sales</td> </tr> <tr> <td colspan="2">Trade</td> </tr> </table>		▼	Purchase		Sales		Trade			
	▼										
Purchase											
Sales											
Trade											
Date	<table border="1"> <tr> <td></td> <td style="text-align: right;">▼</td> </tr> <tr> <td colspan="2" style="background-color: #cccccc;">Expiration date</td> </tr> <tr> <td colspan="2">From date</td> </tr> <tr> <td colspan="2">Start date</td> </tr> <tr> <td colspan="2">To date</td> </tr> </table>		▼	Expiration date		From date		Start date		To date	
	▼										
Expiration date											
From date											
Start date											
To date											

Reference:

<https://docs.microsoft.com/en-us/dynamics365/supply-chain/procurement/purchase-agreements>

QUESTION NO: 29

ブレーキの値を定義する必要があります。

何を設定する必要がありますか？回答するには、該当箇所で適切なオプションを選択してください。

注：正解ごとに1ポイントが加算されます。

Setting	Value										
Price	<table border="1"> <tr> <td></td> <td>▼</td> </tr> <tr> <td colspan="2">Default purchase price</td> </tr> <tr> <td colspan="2">Price group</td> </tr> <tr> <td colspan="2">Purchase agreement</td> </tr> <tr> <td colspan="2">Trade agreement</td> </tr> </table>		▼	Default purchase price		Price group		Purchase agreement		Trade agreement	
	▼										
Default purchase price											
Price group											
Purchase agreement											
Trade agreement											
Purchase price variance	<table border="1"> <tr> <td></td> <td>▼</td> </tr> <tr> <td colspan="2">Active cost</td> </tr> <tr> <td colspan="2">Inventory close</td> </tr> <tr> <td colspan="2">Inventory recalculation</td> </tr> <tr> <td colspan="2">Movement Journal</td> </tr> </table>		▼	Active cost		Inventory close		Inventory recalculation		Movement Journal	
	▼										
Active cost											
Inventory close											
Inventory recalculation											
Movement Journal											

Answer:

Setting	Value										
Price	<table border="1"> <tr> <td></td> <td>▼</td> </tr> <tr> <td colspan="2"><u>Default purchase price</u> </td> </tr> <tr> <td colspan="2">Price group</td> </tr> <tr> <td colspan="2">Purchase agreement</td> </tr> <tr> <td colspan="2">Trade agreement</td> </tr> </table>		▼	<u>Default purchase price</u>		Price group		Purchase agreement		Trade agreement	
	▼										
<u>Default purchase price</u>											
Price group											
Purchase agreement											
Trade agreement											
Purchase price variance	<table border="1"> <tr> <td></td> <td>▼</td> </tr> <tr> <td colspan="2"><u>Active cost</u></td> </tr> <tr> <td colspan="2"><u>Inventory close</u> </td> </tr> <tr> <td colspan="2">Inventory recalculation</td> </tr> <tr> <td colspan="2">Movement Journal</td> </tr> </table>		▼	<u>Active cost</u>		<u>Inventory close</u>		Inventory recalculation		Movement Journal	
	▼										
<u>Active cost</u>											
<u>Inventory close</u>											
Inventory recalculation											
Movement Journal											

Explanation:

Setting

Value

Price

	▼
Default purchase price	
Price group	
Purchase agreement	
Trade agreement	

Purchase price variance

	▼
Active cost	
Inventory close	
Inventory recalculation	
Movement Journal	

QUESTION NO: 30

ベンダーBの運用要件を満たす必要があります。

どうすべきでしょうか？回答するには、該当箇所で適切な選択肢を選んでください。

注：正解ごとに1ポイントが加算されます。

Requirement

Action

Confirm the purchase order.

	▼
Enter the PO and post the confirmation.	
Enter the PO and send a receipt.	
Enter the PO and submit it for approval.	

Approve the workflow.

	▼
Assign the delegate.	
Define the approver.	
Set expiration to auto-approve.	
Set expiration to auto-reject.	

Answer:

Requirement

Action

Confirm the purchase order.

	▼
Enter the PO and post the confirmation.	
Enter the PO and send a receipt.	
Enter the PO and submit it for approval.	

Approve the workflow.

	▼
Assign the delegate.	
Define the approver.	
Set expiration to auto-approve.	
Set expiration to auto-reject.	

Explanation:

Requirement

Action

Confirm the purchase order.

	▼
Enter the PO and post the confirmation.	
Enter the PO and send a receipt.	
Enter the PO and submit it for approval.	

Approve the workflow.

	▼
Assign the delegate.	
Define the approver.	
Set expiration to auto-approve.	
Set expiration to auto-reject.	

QUESTION NO: 31

在庫にある既存のブレーキをテストする必要があります。
この目標を達成するための2つの方法は何ですか？それぞれの正解は完全な解決策を示しています。

注：正解ごとに1ポイントが加算されます。

- A. ファントム部品表 (BOM) 行を割り当てます。
- B. 既存の在庫に対して手動品質注文を作成します。
- C. ブロックされている在庫ステータスにブレーキを割り当てます。
- D. 既存の在庫に対して自動品質注文を作成します。

Answer: B D

Reference:

<https://docs.microsoft.com/en-us/dynamics365/supply-chain/inventory/quality-orders>

QUESTION NO: 32

調達カテゴリの階層構造は、会社の方針に従って設定する必要があります。
あなたはどうすべきでしょうか？

A.

カテゴリ階層に、米国、ハンガリー、カリフォルニア、コロラドの4つのノードを追加します。

B. 統合された法人組織の下に、国ごとにカテゴリ階層ノードを作成します。

C. カテゴリ階層に、ハンガリー、カリフォルニア、コロラドの3つのノードを追加します。

D. 調達カテゴリ階層を作成し、法人ごとにのみ購入ポリシーを割り当てます。

Answer: D

QUESTION NO: 33

ユーザーBの問題を解決する必要がありますか？

どのオプションを選択すべきですか？回答するには、該当箇所で適切なオプションを選択してください。

注：正解ごとに1ポイントが加算されます。

Requirement

Option

Configure an RFQ

▼
Purchase agreement type, solicitation type with scoring method
Purchase order type, solicitation type with scoring method
Purchase requisition, case type with scoring method

Transfer an RFQ

▼
Purchase agreement
From date
Purchase requisition

Answer:

Requirement

Option

Configure an RFQ

▼
Purchase agreement type, solicitation type with scoring method
Purchase order type, solicitation type with scoring method
Purchase requisition, case type with scoring method

Transfer an RFQ

▼
Purchase agreement
From date
Purchase requisition

Explanation:

Requirement	Option
Configure an RFQ	<div style="border: 1px solid black; padding: 2px;"> <div style="border: 1px solid black; padding: 2px; margin-bottom: 2px;">▼</div> <div style="border: 1px solid black; padding: 2px; margin-bottom: 2px;">Purchase agreement type, solicitation type with scoring method</div> <div style="border: 1px solid black; padding: 2px; margin-bottom: 2px;">Purchase order type, solicitation type with scoring method</div> <div style="border: 1px solid black; padding: 2px; background-color: #e0e0e0;">Purchase requisition, case type with scoring method</div> </div>
Transfer an RFQ	<div style="border: 1px solid black; padding: 2px;"> <div style="border: 1px solid black; padding: 2px; margin-bottom: 2px;">▼</div> <div style="border: 1px solid black; padding: 2px; margin-bottom: 2px;">Purchase agreement</div> <div style="border: 1px solid black; padding: 2px; margin-bottom: 2px;">From date</div> <div style="border: 1px solid black; padding: 2px; background-color: #e0e0e0;">Purchase requisition</div> </div>

QUESTION NO: 34

在庫にあるブレーキについては、在庫を分けて保管する必要があります。
 どの2つの行動をとるべきでしょうか？それぞれの正解は、解決策の一部を示しています。
 注：正解ごとに1ポイントが加算されます。

- A. ベンダーAからの受信購買注文にブロック状態を割り当てます。
- B. 処分コードを作成します。
- C. アイテムのデフォルトの在庫ステータスを設定します。
- D. アイテムフィルタコードを割り当てます。
- E. ベンダーBからの受信購買注文にブロック状態を割り当てます。

Answer: A D

QUESTION NO: 35

UserCの問題を解決する必要があります。
 あなたはどうすべきでしょうか？

- A. 在庫状況のみを変更します。
- B. 在庫状況を変更し、補充プロセスを実行します。
- C. 在庫ステータスを変更し、移動ジャーナルを完成させます。
- D. 転送オーダーを作成し、在庫ステータスを変更します。

Answer: A

Reference:

<https://docs.microsoft.com/en-us/dynamics365/supply-chain/inventory/quality-orders>